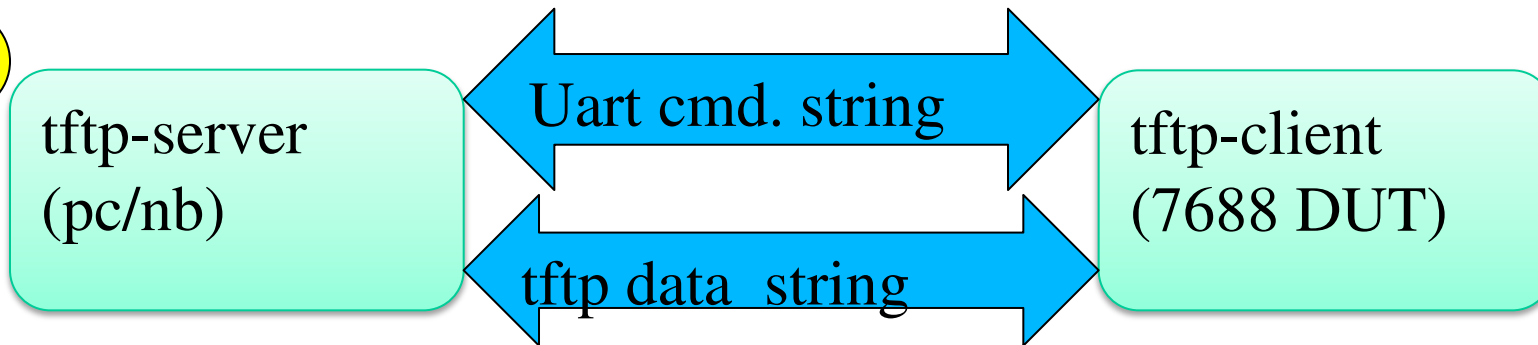
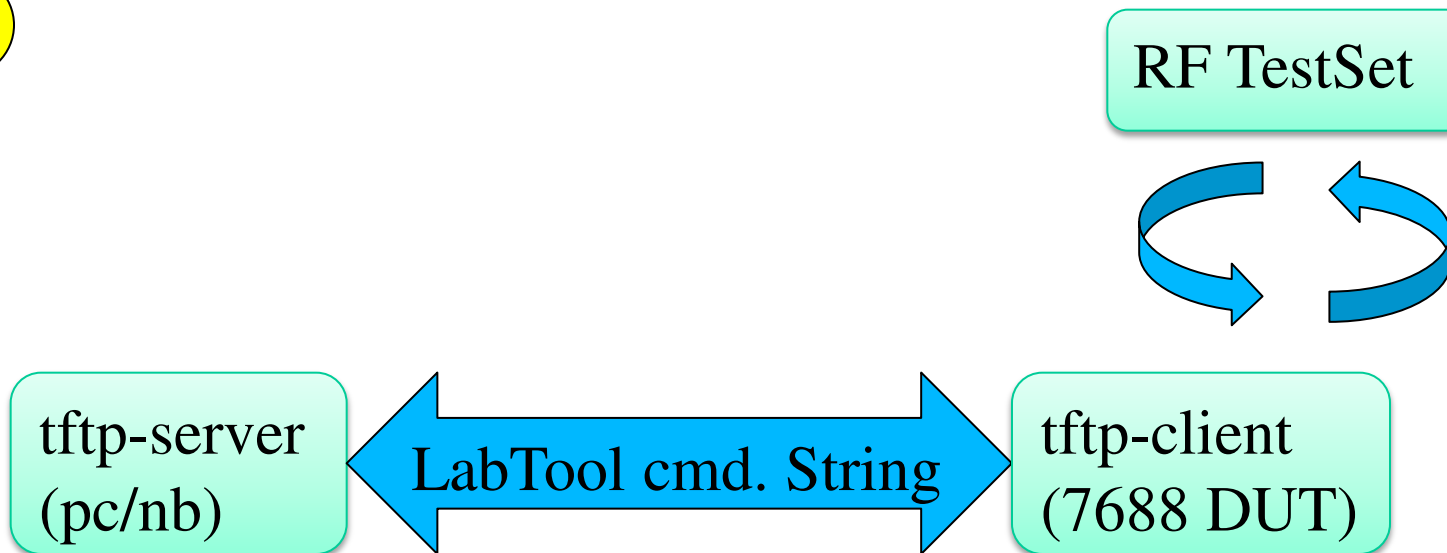


Environment Blocks

A



B

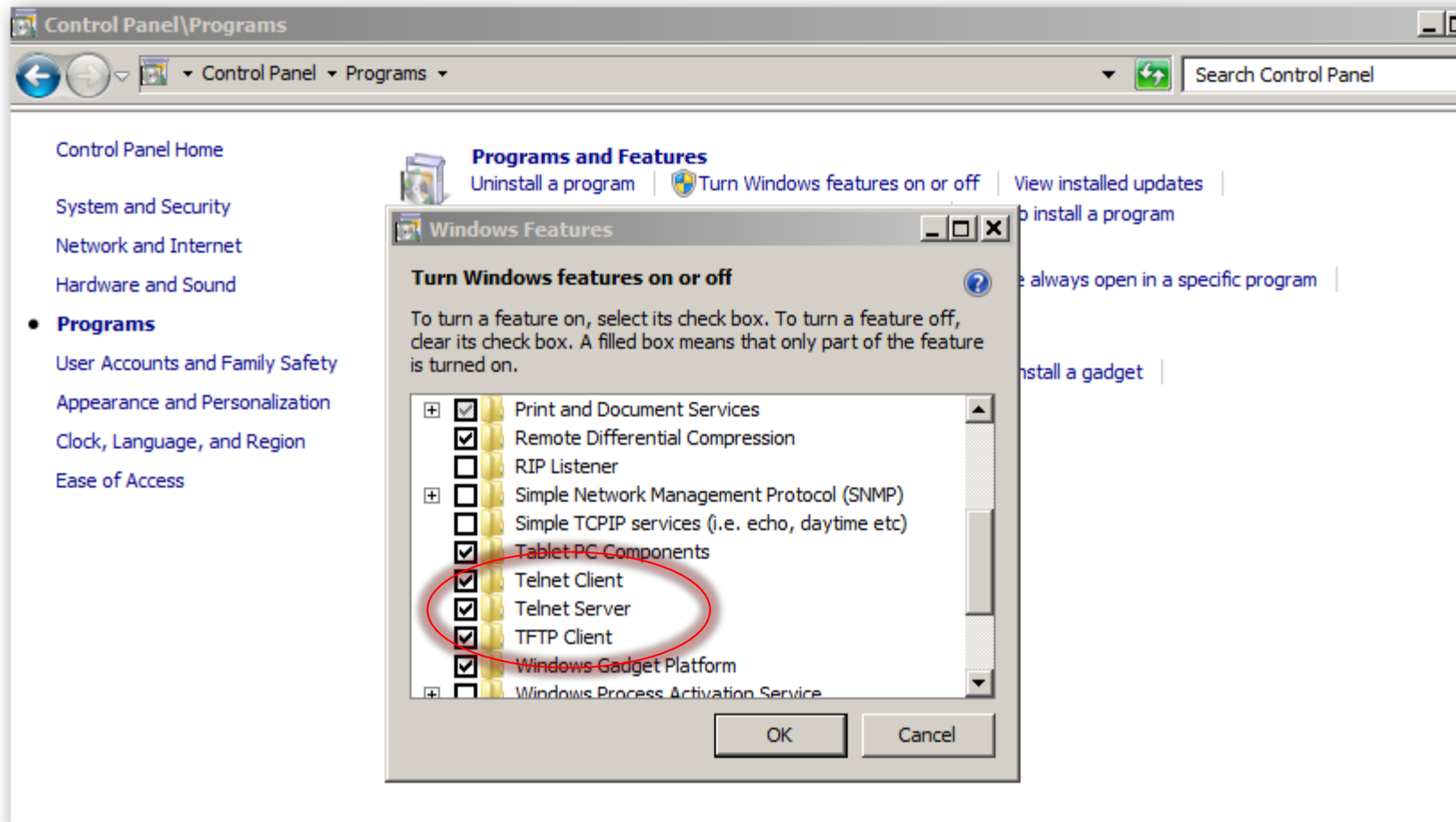




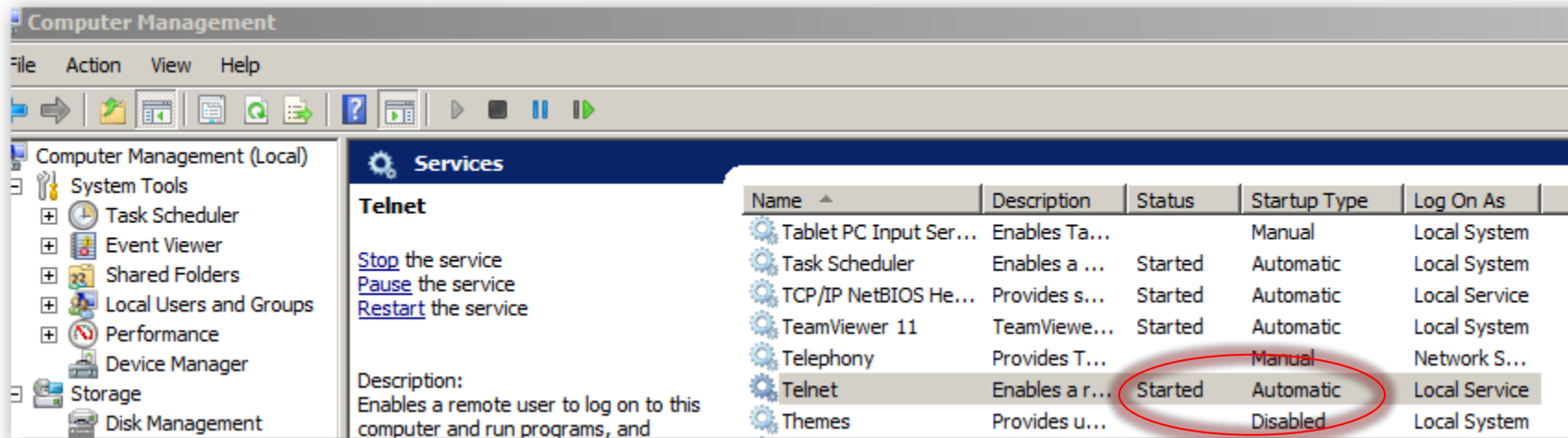
Install 3rd party tool

- ✓ Download tftpd32 to be a tftp server in Windows 7 from
 - ✓ <http://www.softpedia.com/get/Internet/Servers/FTP-Servers/Tftpd32.shtml>
- ✓ Download putty from
 - ✓ <http://www.putty.org/>

Open tftp in Win7

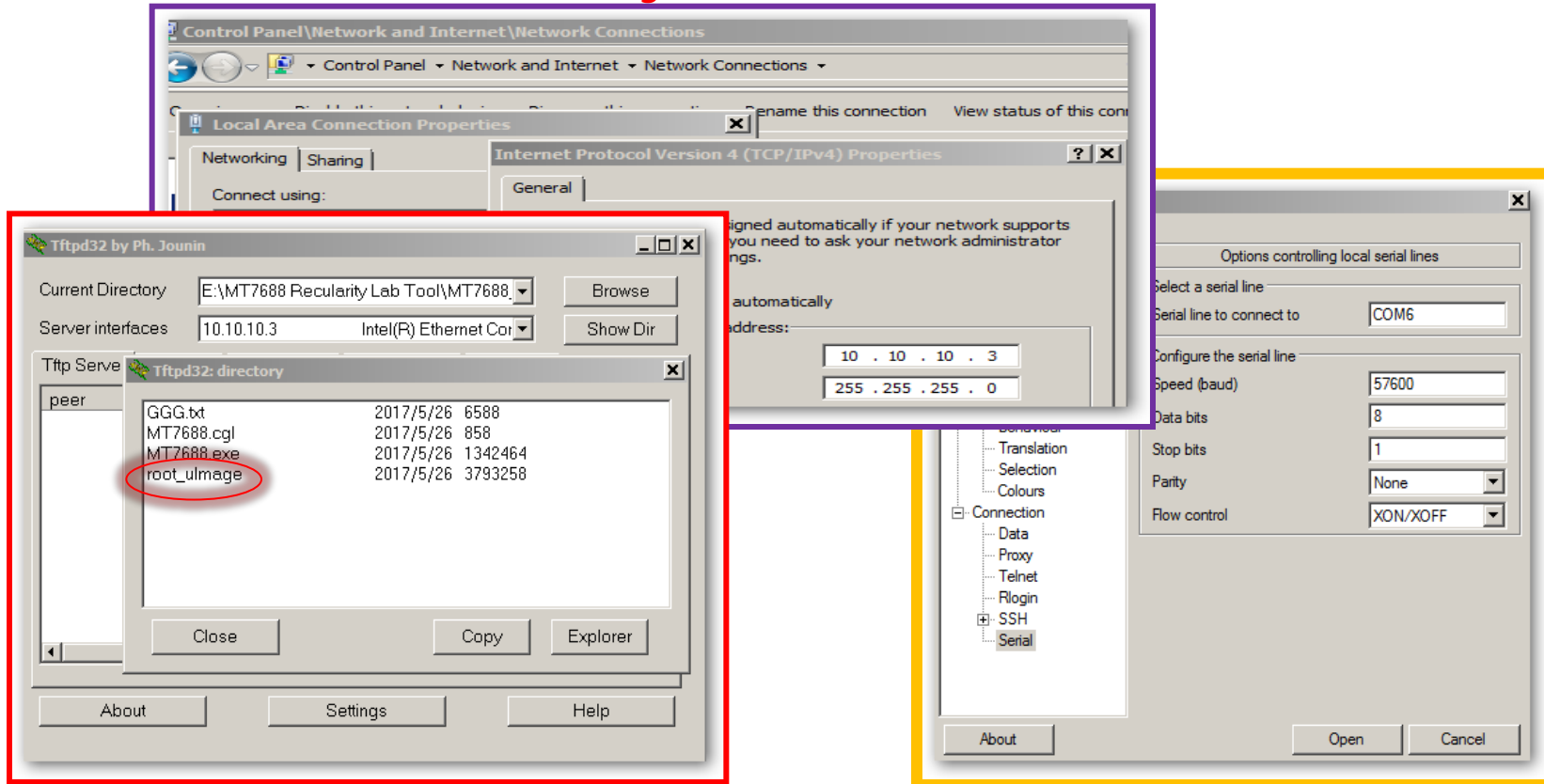


Open telnet in Win7 (optional)



Setup Tftp Server and putty

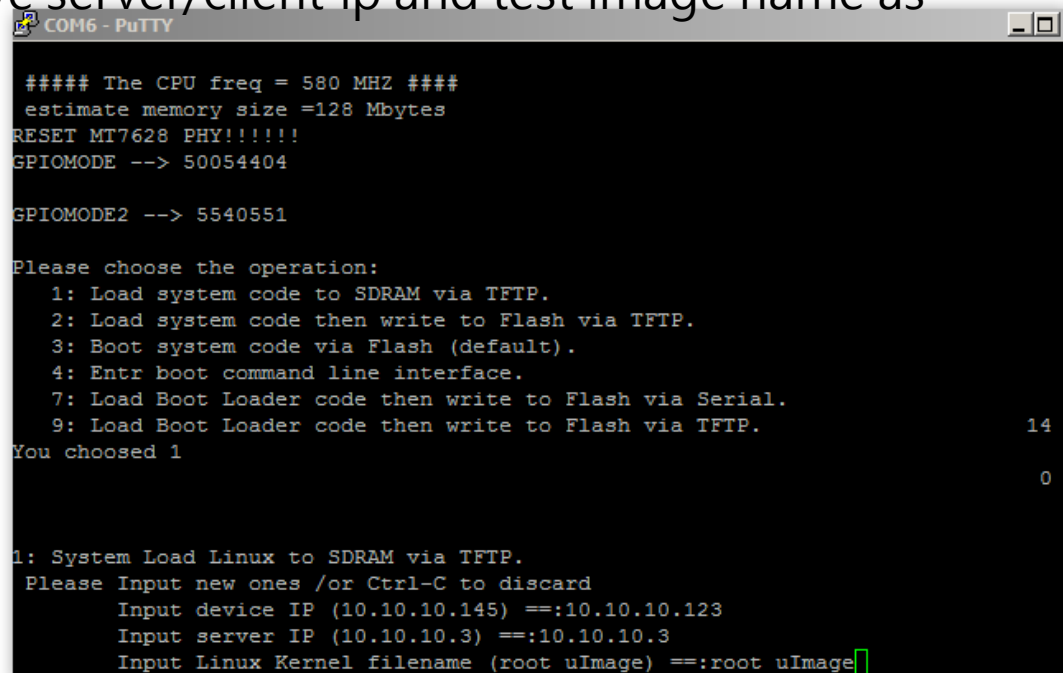
- ✓ Give your pc/nb a static ip – 10.10.10.3 and domain – 255.255.255.0
- ✓ Open tftp32 and give a current Directory and Server interfaces
- ✓ Make sure can browse root_uImage in ShowDir



- ✓ Set com port attributes

Download test image

- ✓ Refer to "Environment Blocks-StepA"
 - ✓ Connect rj45 cable with tftp server/client
 - ✓ Plug in usb cable or press the "reset button" of 7688 DUT to enter "operation menu" of 7688 DUT
 - ✓ Using Putty, it will show as below when you press 1 after powering or reset 7688 DUT. Then give server/client ip and test image name as following.



```
COM6 - PuTTY

#### The CPU freq = 580 MHZ ####
estimate memory size =128 Mbytes
RESET MT7628 PHY!!!!!!
GPIOMODE --> 50054404

GPIOMODE2 --> 5540551

Please choose the operation:
  1: Load system code to SDRAM via TFTP.
  2: Load system code then write to Flash via TFTP.
  3: Boot system code via Flash (default).
  4: Entr boot command line interface.
  7: Load Boot Loader code then write to Flash via Serial.
  9: Load Boot Loader code then write to Flash via TFTP.
You choosed 1

1: System Load Linux to SDRAM via TFTP.
Please Input new ones /or Ctrl-C to discard
Input device IP (10.10.10.145) ==:10.10.10.123
Input server IP (10.10.10.3) ==:10.10.10.3
Input Linux Kernel filename (root_uImage) ==:root_uImage
```